

Safeguarding & Child Protection policy



Management log

Document	Safeguarding & child protection
Author	CEO
Person responsible for the document	CEO
Approved by	Chair of the Board and Chair of the Policy Committee
Date approved	
Date issued	1 September 2023
Review period	Annually
Next review	Summer 2024
Reviewer	Policy committee on behalf of the Board
Signed	Signed
	
Chair of the Board	CEO

Document history

Version	Date authored	Author	Date approved	Date issued	Comments
V1	September 2020	Judi O'Leary	13 September 2020	13 September 2020	To secure a safeguarding and child protection policy which confirms with KCSiE 2020
V2	August 2019	Judi O'Leary	2 September 2019	2 September 2019	Revised to reflect changes to KCSiE 2019
V3	March 2020	Judi O'Leary	30 March 2020	30 March 2020	Revised to ensure we have measures in place in response to the coronavirus national pandemic (see section 35)
V4	July 2020	Helena Brooks (Leader of Governance)	22 July 2020	1 September 2020	Revised to reflect changes to KCSiE 2020 and effective from 1 September 2020
V5	July 2021	Rob Lord Chair of the DSL and	27 July 2021	1 September 2021	Revised to reflect changes to KCSiE 2021 and effective from 1 September 2021 and to ensure

		Helena Brooks (Leader of Governance)			procedures/expectations in response to the coronavirus
V6	July 2022	Rob Lord Chair of the DSL group		1 September 2022	Revised to reflect changes to KCSiE 2022 and effective from 1 September 2022 New template used.
V7	July 2023	Rob Lord		1 September 2023	Revised to reflect changes to KCSiE 2023 and effective from 1 September 2023

Related policies

Policy

Behaviour
Code of conduct (SHINE Professional Standards Charter)
Complaints
Equality
Educational visits
First aid
General Data Protection Regulation (GDPR)
Health and safety
Managing allegations of abuse
Missing children in education
Online safety
Sex and relationships education
Safer Recruitment
Whistleblowing

Website link

Contact individual academies¹
<http://www.shine-mat.com/take-care/>

<https://www.shine-mat.com/business-and-personnel/>
<http://www.shine-mat.com/pupil-welfare/>
Contact individual academies
Contact individual academies
<http://www.shine-mat.com/gdpr/>
Contact individual academies
<https://www.shine-mat.com/business-and-personnel/>
Contact individual academies
Contact individual academies
Contact individual academies
Contact individual academies
Contact admin@shine-mat.com
<https://www.shine-mat.com/business-and-personnel/>

¹<http://www.ironvillecodnorpark.derbyshire.sch.uk/policies/>
<https://www.johnhuntprimary.co.uk/>
<http://www.langold-dyscarr.org/policies/>
<http://www.ranskillprimary.co.uk/key-information/policies>
<https://www.scotholme.com/policies.html>
<http://www.whitemooracademy.co.uk/policies/>

Please note that the version of this document contained at <https://www.shine-mat.com/policies/> is the only version that is maintained.

Any printed copies should therefore be viewed as 'uncontrolled' and as such, may not necessarily contain the latest updates and amendments.

INTRODUCTION

At Shine Multi-Academy Trust we recognise our moral and statutory responsibility to safeguard and protect children from harm and promote the welfare of all pupils. We endeavour to provide a safe and welcoming environment where children are respected and valued. We are alert to the signs of abuse and neglect and follow our procedures to ensure that children receive effective support, protection and justice.

The procedures contained in this policy apply to all staff, volunteers, visitors and governors. All procedures encompassed by this policy will be followed robustly, rigorously and in a timely manner. The policy takes into account the Keeping Children Safe in Education Guidance (September 2023).

In accordance with this policy, Safeguarding and Child Protection are defined as two different things:

- safeguarding is what we do for all our pupils and staff;
- child protection being the procedures we use for children and young people who have been significantly harmed or are at risk of such harm.

We will ensure that all parents/carers are made aware of our responsibilities with regard to child protection procedures and how we will safeguard and promote the welfare of their children through the publication of our Child Protection/Safeguarding Policy on our website. The policy is also available in paper form upon request.

These duties and responsibilities, as set out within the Education Act 2002 sec175 and 157, DfE Statutory Guidance Keeping Children Safe in Education 2023 (KCSIE) and HM Working Together to Safeguard Children 2018 are incorporated into this policy.

Safeguarding Principles

Safeguarding and promoting the welfare of all children, regardless of age, disability, gender, ability, culture, race, language, religion or sexual identity, is of paramount importance.

Everyone's responsibility

Safeguarding and promoting the welfare of children is everyone's responsibility. If children and families are to receive the right help, at the right time, everyone who comes into contact with children and their families has a role to play in identifying concerns, sharing information and taking prompt action.

Child First

In order to fulfil our responsibility effectively, all members of the school community should make sure their approach is child-centred. This means that they should consider, at all times, what is in the best interests of the child.

It could happen here

Staff working with children are advised to maintain an attitude of 'it could happen here' where safeguarding is concerned.

Safeguarding and promoting the welfare of children is defined within KCSIE 2023 & for the purpose of this policy as:

- protecting children from maltreatment
- preventing impairment of children's mental and physical health or development
- ensuring that children grow up in circumstances consistent with the provision of safe and effective care
- taking action to enable all children to have the best outcomes

Note: Children includes everyone under the age of 18.

Policy aims

- confirm that the pupils' development is supported in ways that will foster security, confidence and independence.
- raise the awareness of teachers, non-teaching staff and volunteers of the need to safeguard children and of their responsibilities in identifying and reporting possible cases of abuse/concerns, including: Child-on-Child abuse both on and off-line (including sexual violence, sexual harassment and up-skirting), Serious Violence, Contextual Safeguarding, Female Genital Mutilation (FGM), Child Sexual Exploitation (CSE), Child Criminal Exploitation (CCE), Child Financial Exploitation, County Line incidents, Online safety, witness to Domestic Abuse, Homelessness, duties under PREVENT, Honour Based Violence (HBV) and mental health.
- confirm the structured procedures to be followed by all members of each school community in cases of suspected harm or abuse.

- emphasise the need for good levels of communication between all members of staff and those with designated responsibility for child safeguarding, health and safety and other safeguarding responsibilities.
- emphasise the importance of maintaining and implementing appropriate safeguarding policies, procedures and arrangements of those service providers who use the school's premises through extended schools or provide any other before and after school activities.
- confirm the working relationship with the Local Authority agencies such as Children and Families Direct, the LA Safeguarding Board, and other agencies with similar services in neighbouring authorities. Working Together to Safeguard Children (July 2018) outlines how the agencies should work together.
- highlight the working relationship between the school and the Trust's Safeguarding Team.

Policy Review

This policy will, as a minimum, be fully reviewed once a year. The policy will be formally ratified by the Multi Academy Trust and shared with Local Governing Bodies. Those responsible for school leadership will review the policy on a more regular basis to ensure it remains current, reflects any amendments to statutory guidance and to ensure it reflects local contextual needs and local safeguarding provisions/partnerships. Any amendments beyond the full annual review will be approved by governance mechanisms also.

Most current review and approval dates are located on the cover page.

Related/Supporting policies

This policy should be read in conjunction with:

- Keeping Children Safe in Education 2023, including Allegations made against/Concerns raised in relation to teachers, including supply teachers, other staff, volunteers and contractors
- School's child on child abuse policy
- Trust's Employee Code of Conduct- Professional Standards Charter
- Trust's Managing Allegations Policy
- Trust's Whistleblowing procedures
- Trust's Children's Images Policy
- Trust's Positive Handling Policy
- School's Behaviour Policy
- School's Attendance Policy
- Anti-Bullying Policy

- E-Safety and Acceptable Use Policy
- Trust's Safer Recruitment Policy
- First Aid Policy, including Administration of First Aid
- Administration of medicines in school/Supporting Pupils with Medical Conditions Policy
- Intimate Care Policy
- Site Security Policy
- Children Missing in Education guidance
- Trust's Complaints Policy
- School Equality statement
- School's Accessibility Plan
- Trust Data Protection/Fair Processing Policy
- Visitor and volunteer protocols

Contact Details

Service	Contact Details
School Senior Designated Safeguarding Lead	Rob Lord
School Deputy Designated Safeguarding Lead	Ellen Kelliher, Peter Bevington, Danielle Waterfall
Designated Governor for Child Protection/Safeguarding	Fiona Boyd
Local Authority Specific NOTE: Roles and agency titles vary between Las. Include any relevant LA contacts.	
LA Safeguarding Children in Education Officer	N/A
LA 'Local Authority Designated Officer'	N/A
Social Care/MASH/Duty Teams/Advice Line/Police Support	N/A
National Helplines	
Female Genital Mutilation National Helpline	08080283550
Prevent National Helpline	02073407264

	counter.extremism@education.gsi.gov.uk
NSPCC Whistle Blowing Advice Line	08000280285
Forced Marriage Unit	020 7008 0151 or email fm@fco.gov.uk .
Modern Slavery Helpline	0800 0121700 www.modernslaveryhelpline.org
NSPCC Website	www.nspcc.org.uk
Mental Health Support in Schools	https://www.gov.uk/government/publications/mental-health-and-behaviour-in-schools--2
Public Health England	https://www.gov.uk/government/publications/promoting-children-and-young-peoples-emotional-health-and-wellbeing https://campaignresources.phe.gov.uk/schools/topics/rise-above/overview

Safeguarding children is defined as: The actions we take to promote the welfare of children and protect them from harm are everyone's responsibility. Everyone who comes into contact with children and families has a role to play.

Safeguarding and promoting the welfare of children is defined as:

- Protecting children from maltreatment.
- Preventing the impairment of children's mental and physical health or development.
- Ensuring that children grow up in circumstances consistent with the provision of safe and effective care.
- Taking action to enable all children to have the best outcomes.

NB Definition: Children includes everyone under the age of 18.

Whole school approach to safeguarding:

- We understand the importance every member of our staff has through their contact with children in and outside of our school environment and the particular importance of the roles and relationships they have which places them in a position to identify concerns early, provide help for children and promote children's welfare and prevent concerns from escalating.
- As a school we have a responsibility to provide a safe environment in which children can learn.
- We will make every effort to identify children who may benefit from early help and put in place support as soon as a problem emerges at any point in a child's life.
- **Any staff member** who has **any** concerns about a child's welfare should follow the processes set out in this child protection policy and raise concerns with the designated safeguarding lead or deputy without delay.
- All our staff should expect to support social workers and other agencies following any referral, especially if they were involved in being alert to or receiving a disclosure of risk, harm or abuse or harassment from a child.
- Our senior designated safeguarding lead will provide support to staff to carry out their safeguarding duties and who will liaise closely with other services such as children's social care, police, early help, and health where required, as the designated safeguarding lead (and any deputies) are most likely to have a complete safeguarding picture and be the most appropriate person to advise on the response to safeguarding concerns.

Safeguarding is not just about protecting children from deliberate harm. It also relates to the broader aspects of care and education including:

- Pupils' health and safety and emotional well-being, and their mental and physical health or development.
- Meeting the needs of children with special educational needs and/or disabilities.
- Ensuring reasonable adjustments are provided as informed by the Equality Act for disabled children and young people
- Where a child receives elective home education and has an EHCP, the LA should review the plan working with parents and carers.

- The use of reasonable force.
- Meeting the needs of children with medical conditions.
- Providing first aid.
- Educational visits and off- site education.
- Intimate care and emotional wellbeing.
- On-line safety and associated issues including filtering and monitoring in accordance with DfE monitoring standards.
- Appropriate arrangements to ensure school security, taking into account the local context.
- Keeping children safe from risks, harm, exploitation and sexual violence and sexual harassment between children: KCSiE 2023 Annex A.

Safeguarding can involve a range of potential issues such as:

- Neglect, physical abuse, sexual abuse, and emotional abuse.
- Contextualised also known as extra-familial abuse.
- Bullying, including online bullying (by text message, on social networking sites, and prejudice-based bullying and being aware of the ease of access to mobile phone networks.
- The approach to online safety, including appropriate filtering and monitoring on school devices and school networks for home use.
- Going frequently missing and who are 'absent from education' going 'missing from care or home' and the risks this poses on repeat occasions and for prolonged periods.
- Domestic Abuse including teenage relationship abuse.
- Racist, disability- based, homophobic, bi-phobic, or transphobic abuse.
- Gender based violence/violence against women and girls.
- Risk of extremist behaviour and/or radicalisation and susceptible to being at risk of being drawn into terrorism.
- Child sexual exploitation, human trafficking, modern slavery, sexual or criminal exploitation.
- A young carer.
- Has a mental health need and has an effect on school attendance and progress.
- Has special educational needs (whether or not they have a statutory Education Health and Care Plan (EHCP).
- Privately fostered.
- Has returned home to their family from care.
- Has a family member in prison or is affected by parental offending.
- Child-on-Child Abuse (broadened by KCSiE 2023 to include children abusing other children, other varying form of bullying including online and sexually harmful behaviour, sexual violence, and sexual harassment (further defined in KCSiE 2023 Part Five).
- Harm outside the home extra familial harm.
- The impact of new technologies, including 'sexting' and accessing pornography.
- Issues which may be specific to a local area or population, is showing signs of being drawn into anti-social or criminal behaviour, including gang activity or involvement and associations with organised crime groups or county lines.
- In possession of a knife and or involved in knife crime, youth violence, criminal child exploitation (CCE).
- Is in family circumstances which present challenges for the child, such as drug and alcohol misuse, adult mental health issues and domestic abuse/harm.
- Is at risk of or from serious violence and violent crime.

- Persistent absence from education, including persistent absence for part of the school day.
- At risk of suspension or permanent exclusion
- Particular issues affecting children including domestic abuse and violence, female genital mutilation, and honour-based abuse.
- Being subject to any conduct where the purpose is to cause a child to marry before their eighteenth birthday, even if violence, threats, or another form of coercion are not used. As with the existing forced marriage law, this applies to non-binding, unofficial 'marriages' as well as legal marriages (Law change on Forced Marriage, February 2023).
- 'Up-skirting'- The Voyeurism (Offences) Act, which is commonly known as Up-skirting Act, came into force on 12 April 2019. Up-skirting is a criminal offence and reportable by all teachers (KCSiE Annex A).

All our staff and volunteers are aware of the indicators of abuse and neglect and know what to look for is vital for the early identification so that support can be put in place. Our staff and volunteers are also aware of the specific safeguarding issues that indicate or inform of concerns or incidents linked to child criminal exploitation and child sexual exploitation and know to report concerns directly to the designated safeguarding or a member of the senior leadership team should the designated safeguarding lead not be available for children who may be in need of help or protection.

Our staff recognise that children may not feel ready or know how to tell someone that they are being abused, exploited, or neglected, and/or they may not recognise their experiences as harmful. Children may also feel embarrassed, humiliated, or could be being threatened not to tell, so not feel able to share what is happening to them. Alternatively, we recognise children may not want to make a disclosure or talk about what is happening due to their vulnerability, disability and/or sexual orientation or language barriers. This should not prevent staff from having a professional curiosity and speaking to the DSL if they have concerns about a child and agree a way forward to support the child and determine how best to build trusted relationships with children and young people which facilitate good opportunities for communication.

All staff should **always** speak to the designated safeguarding lead, or deputy at the earliest opportunity.

As a school we are aware that abuse, neglect, and safeguarding issues are rarely standalone events and cannot be covered by one definition or one label alone. In most cases, multiple issues will overlap with one another, therefore all staff should always be vigilant and always raise any concerns with the designated safeguarding lead (or deputy).

All staff should be aware that safeguarding incidents and/or behaviours can be associated with factors outside the school and/or can occur between children outside of our school environment.

All our staff have received information and training regarding the risks that can take place outside their families. This is known as extra-familial harm and these can take a variety of different forms and children can be vulnerable to multiple harms including (but not limited to) sexual exploitation, criminal exploitation, sexual abuse, serious youth violence and county lines.

Our staff are aware that technology offers many opportunities but is a significant component in many safeguarding and wellbeing issues. Children are at risk of abuse online as well as face to face. Children can also abuse their peers online, this can take the form of abusive, harassing, and misogynistic messages, the non-consensual sharing of indecent images, especially around chat groups, and the sharing of abusive images and pornography, to those who do not want to receive such content.

All our staff have 'an understanding of the expectations, applicable to their roles and responsibilities in relation to filtering and monitoring' of ICT systems and regular monitoring of school's equipment and networks.

Our school approach to online safety, including appropriate filtering and monitoring on school devices and school networks is reflected in this Child Protection Policy including awareness of the ease of access to mobile phone networks. (See KCSiE 2023 Paragraph 138).

Our Snr DSL and the DSL team has the lead responsibility in this area, which is overseen and regularly reviewed by the 'Governing body/ trust, along with considering the number of and age range of their children, those who are potentially at greater risk of harm, and how often they access the IT system along with the proportionality of costs versus safeguarding risks.'

Our Trust will ensure they maintain oversight of the Online Safety Policy contained within our main child protection policy, and the arrangements put in place to ensure appropriate filtering and monitoring on school devices and school network. The appropriateness of any filtering and monitoring systems will in part be informed by the risk assessment required by the Prevent Duty as required by KCSiE 2023 paragraph 138 to 147.

This will include:

- identify and assign roles and responsibilities to manage filtering and monitoring systems.
- review filtering and monitoring provision at least annually.
- block harmful and inappropriate content without unreasonably impacting teaching and learning.
- have effective monitoring strategies in place that meet the school/ colleges safeguarding need.
- review and discuss the standards with the leadership team, IT staff and service providers to ensure the school/college meets the standard published by the [Department for Education filtering and monitoring standards](#).

The new filtering and monitoring requirements put in place by KCSiE 2023 (paragraphs 124,138,141 and 142) have encouraged us to work closely with our IT provider to review our protection. SLT, the ICT Lead and the IT provider have worked in conjunction to ensure our filtering and monitoring systems are robust. All staff have also received additional training on how to spot and report issues quickly.

Our trust will ensure a review is maintained to ensure the standards and discuss with IT staff and service providers these standards and whether more needs to be done to support our school/college in meeting and maintaining this standard and communicating these to staff, our pupils, parents, carers and visitors to

the school who provide teaching to children as part of the learning and educational opportunities we provide.

Our Senior DSL and the DSL team will always act in the 'best interest of the child' and remain mindful of the importance with parents and carers about safeguarding concerns held for children and in particular children's access to online sites when away from school.

We will support understanding of harmful online challenges and hoaxes and share information with parents and carers and where they can get help and support.

All forms of abuse or harassment will be reported in accordance with national safeguarding guidance, and we will take a 'zero tolerance' approach to harassment and abuse as informed in KCSiE.

As a school should an incident or disclosure be made by a child, our staff will always reassure the child (victim) that they are being taken seriously and that they will be supported and kept safe, but we recognise that not every victim will view themselves as such. We will also be mindful of the use of other terminology such as '**alleged perpetrator(s)**' or '**perpetrator(s)**' as in some cases the abusive behaviour will have been harmful to the perpetrator as well.

We will do our best to ensure children understand the law on child-on-child abuse is there to protect them rather than criminalise them. In doing this we will discuss with relevant statutory safeguarding agencies to ensure all concerns or incidents are addressed fully, and where required different types of assessment and services are put in place where required and in accordance with the Pathway to Provision v 9.1.

Identifying Concerns

All members of staff, volunteers and governors will know how to identify pupils who may be being harmed and then how to respond to a pupil who discloses abuse, or where others raise concerns about them. Our staff will be familiar with procedures to be followed.

Staff understand that abuse, neglect, and safeguarding issues are rarely standalone events that can be covered by one definition, and that in most cases multiple issues will overlap with each other. Staff who regularly come into contact with children are aware of the DfE guidance [What to do if you're worried a child is being abused](#)

The four categories of child abuse are as follows:

1. **Physical Abuse**
2. **Emotional Abuse**
3. **Sexual Abuse**
4. **Neglect**

Indicators of abuse and neglect

Abuse: a form of maltreatment of a child. Somebody may abuse or neglect a child by inflicting harm or by failing to act to prevent harm. Children may be abused in a family or in an institutional or community setting by those known to them or, more rarely, by others. Abuse can take place wholly online, or technology may be used to facilitate offline abuse. Children may be abused by an adult or adults or by another child or children.

Physical abuse: a form of abuse which may involve hitting, shaking, throwing, poisoning, burning, or scalding, drowning, suffocating, or otherwise causing physical harm to a child. Physical harm may also be caused when a parent or carer fabricates the symptoms of, or deliberately induces, illness in a child.

Emotional abuse: the persistent emotional maltreatment of a child such as to cause severe and adverse effects on the child's emotional development. It may involve conveying to a child they are worthless or unloved, inadequate, or valued only insofar as they meet the needs of another person. It may include not giving the child opportunities to express their views, deliberately silencing them or 'making fun' of what they say or how they communicate. It may feature age or developmentally inappropriate expectation being imposed on children. These may include interactions that are beyond a child's developmental capability as well as over protection and limitation of exploration and learning or preventing the child from participating in normal social interaction. It may involve seeing or hearing the ill-treatment of another. It may involve serious bullying (including cyberbullying), causing children to feel frightened or in danger, or the exploitation or corruption of children. Some level of emotional abuse is involved in all types of maltreatment of a child, although it may occur alone.

Sexual abuse: involves forcing or enticing a child or young person to take part in sexual activities, not necessarily involving violence, whether or not the child is aware of what is happening. The activities may involve physical contact, including assault by penetration (for example rape or oral sex) or non-penetrative acts such as masturbations, kissing, rubbing, and touching outside of clothing. They may also include non-contact activities, such as involving children to look at, or in the production of, sexual images, watching sexual activities, encouraging children to behave in sexually inappropriate ways, or grooming a child in preparation for abuse. Sexual abuse is not solely perpetrated by adult males. Women can also commit acts of sexual abuse, as can other children. The sexual abuse of children by other children is a specific safeguarding issue (also known as child-on-child abuse) in education and **all** staff should be aware of it and of their school or colleges policy and procedures for dealing with it.

Neglect: the persistent failure to meet a child's basic physical and/or psychological needs, likely to result in the serious impairment of the child's health or development. Neglect may occur during pregnancy, for example, as a result of maternal substance abuse. Once a child is born, neglect may involve a parent or carer failing to; provide adequate food, clothing, and shelter (including exclusion from home or abandonment); protect a child from physical and emotional harm or danger; ensure adequate supervision (the use of inadequate caregivers); or ensure access to appropriate medical care or treatment. It may also include neglect of, or unresponsiveness to, a child's basic emotional needs.

Safeguarding issues: All staff should have an awareness of safeguarding issues that can put children at risk of harm. Behaviours linked to issues such as drug taking and or alcohol misuse, deliberately missing

education and consensual and non-consensual sharing of nudes and semi-nude images and/or videos can be signs that children are at risk.

We continue to regularly address how to behave online and how to report if issues occur. We recognise that on-line abuse may be a greater issue when children are not in attendance at school and are engaging in learning remotely and may have limited supervision from parents/carers. We continue to teach this through our ICT and PSHE curriculum.

Our Trust ethos demonstrates that the effective safeguarding of children can only be achieved by putting children at the centre of a system where we listen and hear what they say. Every individual within Shine Multi-Academy Trust will play their part, including working with professionals from other agencies, particularly social workers, to meet the needs of our most vulnerable children and keep them safe. We will take opportunities to teach children about important safeguarding issues in a way that is age appropriate.

During our safeguarding training, all staff are taught how to put the child at the heart of any decision-making, no matter how difficult this may feel. Staff are taught how to handle disclosures, including having a 'it could happen' culture and not making promises to the child themselves.

Our school is led by senior members of staff and governors whose aims are to provide a safe environment and vigilant culture where children and young people can learn and be safeguarded. If there are safeguarding concerns, we will respond with appropriate action in a timely manner for those children who may need help or who may be suffering, or likely to suffer, significant harm.

Where staff members have concerns about a child (as opposed to a child being in immediate danger) they will decide what action to take in conjunction with the Snr Designated Safeguarding Lead. Although we advocate that any staff member can make a referral to children's social care, especially where a child is identified as being in immediate danger, they should however ensure that the Designated Safeguarding Lead (DSL), or a member of the senior leadership team is informed as soon as possible.

We also ensure that all our staff are clear that whilst they should discuss and agree with the DSL any actions to be taken, they are able to escalate their concerns and contact MASH, MASH Consultation Line or social care to seek support for the child if despite the discussion with the DSL their concerns remain. Staff are also informed of the school's whistle blowing procedures and the contact details for the Local Authority LADO and NSPCC helpline.

The school regularly engages in meetings regarding its pupils who are most vulnerable. School may be represented by a combination of DSLs, class teachers or the member of staff who knows the child best. We regularly engage in meetings with outside agencies and work collaboratively in the best interest of the child. Additional training may also be required and attended to further enhance the care we can offer.

Where a school places a pupil with an alternative provision provider, the school continues to be responsible for the safeguarding of that pupil and should be satisfied that the provider can meet the needs of the pupil.

Children who attend alternative education often have complex needs, it is important governing bodies/trusts and designated safeguarding leads ensure children are fully supported at all times, and the alternative setting is aware of any additional risks of harm that pupils may be vulnerable to. Information sharing for pupils who receive education provision outside of a mainstream setting is vital to support the child and ensure the learning environment where they are placed has all necessary information for the child before they access the provision. The working together principles are key to keep the child safe and understanding the vulnerabilities needing to be supported. This should include up to date contact details for the professionals working with the child and family.

Schools should also obtain written confirmation from the alternative provision provider that appropriate safeguarding checks have been conducted on individuals working at the establishment, i.e., those checks that the school would otherwise perform in respect of its own staff.

The Senior Designated Safeguarding Lead (DSL) or headteacher, who is familiar with national and local guidance, will share concerns, where appropriate, with the relevant agencies.

In the event that outside organisations, who may use the school site, receive allegations in relation to safeguarding, the school is aware of their duty to manage this and their duty to support safeguarding procedures. (KCSiE 2023 paragraph 377). This may involve the school's safeguarding team referring cases to the LADO and supporting with any investigation.

The Senior DSL and deputies (DSL team) maintains a key role in raising awareness amongst staff about the needs of children who have or who have had a social worker and the barriers that those children might experience in respect of attendance, engagement and achievement at schools or college.

The Senior DSL along with the Designated Teacher can inform the Governing body and Headteacher the number of children in their cohort who have or who have had a social worker and appropriate information is shared with teachers and staff on individual children's circumstances

The Designated Teacher and Senior Designated Safeguarding Lead maintain data for children who have looked after status and for children who have been involved in the care system.

The Designated Teacher maintains good links with the Virtual School Head to promote the educational achievement of previously looked after children. The role of virtual school heads was extended in June 2021, to include a non-statutory responsibility for the strategic oversight of the educational attendance, attainment, and progress of children with a social worker. The virtual school head should identify and engage with key professionals, helping them to understand the role they have in improving outcomes for children. This should include Designated Safeguarding Leads, social workers, headteachers, governors, Special Educational Needs Co-ordinators, mental health leads, other local authority officers.

Under the section on additional safeguarding vulnerabilities of children with SEND, the SEND Code of Practice is a source of information and support is available from specialist organisations including SENDIASS.

Our Child Protection Policy

There are seven main elements to our policy:

- Providing a safe environment in which children can learn and develop.
- Ensuring we practice safe recruitment in checking the suitability of staff and volunteers to work with children.
- Developing and then implementing procedures for identifying and reporting cases, or suspected cases of abuse in and outside of school.
- Supporting pupils who have social care involvement in accordance with his/her child in need plan, child protection plan or are subject to Local Authority Care.
- Raising awareness of safeguarding children, child protection processes and equipping children with the skills needed to keep them safe in and outside of school.
- Working in partnership with agencies and safeguarding partners in the 'best interest of the child.'
- Ensuring we have appropriate policies and procedures to deal with child-on-child sexual violence and sexual harassment, which includes filtering and monitoring arrangements for online safety and harms.

We recognise that because of the day-to-day contact our school have with children they and we are well placed to observe the outward signs of abuse.

The school will therefore:

- Establish and maintain an environment where children feel secure, are encouraged to talk, and are listened to and heard.
- Ensure children know that there are trusted adults in the school who they can approach if they are worried.
- Ensure that every effort is made to establish effective working relationships with parents, carers, and colleagues from other agencies.
- Include opportunities in the RSHE curriculum for children to develop the skills they need to recognise and stay safe from abuse by:
- Recognise and managing risks including online safety, radicalisation and extremism, sexual exploitation, child on child sexual violence and sexual harassment, the sharing of nude and semi-nude images which has replaced what was termed as sexting.
- Support the development of healthy relationships and awareness of domestic violence and abuse, recognising that Domestic Abuse can encompass a wide range of behaviours and may involve a single incident or a pattern of incidents. That abuse can be, but is not limited to, psychological, physical, sexual, financial, or emotional harm and children can be victims of domestic abuse. They may see, hear, or experience the effects of abuse at home and/or suffer domestic abuse in their own intimate relationships (teenage relationship abuse). All of which can have a detrimental and long-term impact on their health, well-being, development, and ability to learn.
- Recognising how pressure from others and safeguarding vulnerabilities can affect their behaviour.
- Recognising the link between mental health, school attendance and children 'absent from education' and the impact on learning, progress, and educational attainment.
- Knowing that as a school we will act swiftly to address any concerns related to serious violence, gang and knife crime or child on child sexual violence or sexual harassment incidents.
- Ensuring our behaviour policy includes measures to prevent bullying, including cyberbullying, harmful online challenges, hoaxes, prejudice-based and discriminatory bullying and use of social media platforms.
- Maintain an on-line safety policy which address statutory filtering and monitoring standards, which take into account remote learning, and use of mobile and smart technology and is reviewed regularly to take into account any new threats.
- The response required by schools and safeguarding agencies to address any 'harm outside the home' also known as 'extra familial harm.' *Schools* are a place of protection and where children and young people can share concerns and seek support and are place of safety and where children and young people can form safe and trusted relationships. Through creating a whole *school* ethos and sharing excellent communication with safeguarding partners and services, children and young people can feel assured they will be listened to, heard, and offered support to enable them share sensitive information and strengthen their resilience.
- Importance of our *school/colleges* ethos of working together with parents, carers, and external services to form strong and trusted partnerships which can advocate trauma informed and trauma aware responses and where trusted relationships can be formed and go

on to create safe places and spaces within the community, so children and young people know how to access a place of safety outside of the school/college environment if needed.

- We will take all reasonable measures to ensure any risk of harm to children's welfare is minimised inside and outside of the school environment.
- Take all appropriate actions to address concerns about the welfare of a child, working to local policies and procedures in full working partnership with agencies.
- Ensure robust child protection arrangements are in place and embedded in the daily life and practice of the school.
- Promote pupil health and safety.
- Promote safe practice, and challenge unsafe practice.
- Ensure that procedures are in place to deal with allegations of abuse against teachers and other staff including volunteers, supply staff and contractors. KCSiE Part Four has two sections, the second section addresses low-level concerns.
- Provide first aid and meet the health needs of children with medical conditions
- Ensure school site security.
- Address drugs and substance misuse issues.
- Support and plan for young people in custody and their resettlement back into the community.
- Work with all agencies regarding missing children, anti-social behaviour/gang activity and violence in the community/knife crime and children at risk of sexual exploitation.
- Everyone having a duty to safeguard children inside/outside the school environment including school trips, extended school activities, vocational placements, and alternative education packages.

We will follow the procedures set out by the DfE in Keeping Children Safe in Education 2023 to:

- Ensure we have a Senior Designated Safeguarding Lead (DSL), who is a member of the school/college leadership team, and a Deputy Safeguarding Lead for child protection/safeguarding who has received appropriate training and support for this role.
- The Designated Safeguarding Lead role is written into their job description and clarifies the role and responsibilities including as defined in KCSiE 2023 Annex C.
- Ensure we have a nominated governor responsible for child protection/safeguarding.
- Ensure that we have a Designated Teacher for Looked After Children (LAC).
- Ensure every member of staff (including temporary, supply staff and volunteers) and the governing body knows the name of the Senior Designated Safeguarding Lead, their deputies responsible for child protection, and their role.
- Ensure all staff and volunteers understand their responsibilities in being alert to the signs of abuse and their responsibility for referring any concerns to the Designated Safeguarding Lead, or to children's social care/police if a child is in immediate danger.
- Ensure all staff and volunteers are aware of the early help process and understand their role in making referrals or contributing to early help offers and arrangements.
- Ensure that there is a whistleblowing policy and culture where staff can raise concerns about unsafe practice, and that these concerns will be taken seriously.
- Ensure that there is a complaints system in place for children and families.
- Ensure that parents have an understanding of the responsibility placed on the school and staff for child protection and safeguarding by setting out its obligations in the school prospectus and on the school's website.

- Notify Children's Social Care if there is an unexplained absence for a child who is subject to a child protection plan and where no contact can be established with the child, or a parent or appropriate adult linked to the child.
- Develop effective links with relevant agencies and cooperate as required with their enquiries regarding child protection matters, including attendance at child protection conferences.
- Keep written records of concerns about children, even where there is no need to refer the matter immediately; documenting and collating information on individual children to support early identification, referral, and actions to safeguard.
- Ensure all records are kept securely; As a school we use CPOMS to safely store information electronically.
- Ensure that we follow robust processes to respond when children are missing from education or missing from home or care.
- Develop and then follow procedures where an allegation is made against a member of staff or volunteer.
- Ensure safe recruitment practices are always followed.
- Apply confidentiality appropriately.
- Apply the NSCP escalation procedures if there are any concerns about the actions or inaction of social care staff or staff from other agencies.

Supporting children

We recognise that children may not feel ready or know how to tell someone that they are being abused, exploited, or neglected, and/or they may not recognise their experiences as harmful. For example, children may feel embarrassed, humiliated, or being threatened. This could be due to their vulnerability, disability and/or sexual orientation or language barriers. We recognise that children who are abused or who witness violence may find it difficult to develop a positive sense of self-worth. They may feel helplessness, humiliation, and some sense of blame. The school may be the only stable, secure, and predictable element in the lives of children at risk. When at school their behaviour may be challenging and defiant or they may be withdrawn. This should not prevent staff from having a professional curiosity and speaking to the DSL if they have concerns about a child. It is also important that staff determine how best to build trusted relationships with children and young people which facilitate communication. We also recognise that there are children who are more vulnerable than others, which include children with special educational needs and or disabilities.

All staff including volunteers are advised to maintain the attitude of **'it could happen here'** where safeguarding is a concern, and when concerned about the welfare of the child should always act in the **best** interests of the child.

Our school will endeavour to support the pupil through:

- Developing the content of the curriculum to allow opportunity to learn what is right and wrong and how we should be treated. This includes opportunities to express how we feel through the PSHEE/ RSHE curriculum.
- Maintaining a school ethos which promotes a positive, supportive, and secure environment, and which gives pupils a sense of them being valued.
- The school behaviour policy, anti-bullying policy and child-on-child abuse policy which is kept up to date with national and local guidance and which is aimed at supporting vulnerable pupils in our school.
- Our school will proactively ensure that all children know that some behaviours are unacceptable and will need to be addressed but as members of our school they are valued and will be supported through the time required to deal with any abuse or harm that has occurred, or outcomes from incidents.
Children are aware that if they have any worries or concerns they can speak to any adult. Children are also aware who the DSLs are and where they can find them. The children are regularly reminded of this and are aware that they will be offered support should they need it.
- Liaison with other agencies that support the pupil such as Children’s Social Care (in line with the Pathway to Provision Version 9.1, published in May 2021), Behaviour and Attendance Service and Education Psychology Service, use of Complex Case Resolution Meetings and the Early Help Assessment Form (EHAF), etc.
- Ensuring that, where a pupil leaves and is subject to a child protection plan, child in need plan or where there have been wider safeguarding concerns, their information is transferred to the new school immediately or within **5 working days** and that the child’s social worker is informed.
- Ensuring that the vulnerability of children with special educational needs and or disabilities is recognised and fully supported. The school SENDCO is also a DSL and all DSLs have received additional training to support children with additional needs.
- Where a child discloses a concern or informs of an incident that has involved them in an incident involving sexual violence and or sexual harassment the staff member will ensure the child (victim) is taken seriously, kept safe and never be made to feel like they are creating a problem for reporting abuse, sexual violence, or sexual harassment.
- The DSL and Headteacher will be informed immediately, and actions taken in accordance with the school child-on -child/ sexual violence and sexual harassment between children in school and college policy.

Safe Staff and Safe Recruitment

- The leadership team and multi academy trust of the school will ensure that all safer working practices and recruitment procedures are followed in accordance with the guidance set out in KCSiE 2023 Part Three and advised by Multi Academy Trust HR Services policy and practice guidance.
- School leaders, staff and members of the trust will be appropriately trained in safer working practices and access the safer recruitment training.
- Statutory pre-employment checks and references from previous employers are an essential part of the recruitment process. We will ensure we adopt the appropriate necessary procedures to carry out the checks required and where any concerns arise, we will seek advice and act in accordance with national guidance.

- The school in place recruitment, selection, and vetting procedures in accordance with KCSiE 2023 Part Three and maintains a Single Central Record (SCR), which is reviewed regularly and updated in accordance with KCSiE 2023 Part Three paragraphs 206 to 351.
- Staff will have access to advice on the boundaries of appropriate behaviour and will be aware of the School Employee Code of Conduct, which includes contact between staff and pupils outside the work context. Concerns regarding low-level concerns will be included in our Code of Conduct from 1 September 2023 in line with KCSiE Part Four Section two. The code of conduct has been handed out during September Inset but is also available at the school office.
- Newly appointed staff and volunteers will be informed of our arrangements for safer working practices by completing a full induction programme before beginning working and contact with pupils.
- In the event of any complaint or allegation against a member of staff, the headteacher (or the Designated Safeguarding Lead) if the headteacher is not present, will be notified immediately. If it relates to the headteacher, the trust will be informed without delay. We will respond to all allegations robustly and appropriately in collaboration with the Local Authority Designated Officer (LADO), LADO Allegation Officers and HR Business Partner or HR Service.
- Staff may find some of the issues relating to child protection and the broader areas of safeguarding upsetting and may need support which should be provided by the school and their Human Resources Team.
- Advice and support will be made available by the Safeguarding Children in Education Officer (SCiEO), LADO and NCC HR where appropriate to the leadership team.
- All new employees will be appropriately inducted to their role and a link to the [Induction Checklist for Safer Recruitment](#) can be accessed from HR's guidance section of the School Portal.

Where the school places a pupil with an alternative provision provider, the school continues to be responsible for the safeguarding of that pupil and should be satisfied that the provider meets the needs of the pupil.

Schools will obtain written confirmation from the alternative provision provider that appropriate safeguarding checks have been conducted on individuals working at the establishment, i.e., those checks that the school would otherwise perform in respect of its own staff.

This will be organised by the DSL team and the Headteacher.

Roles and Responsibilities

All staff and volunteers

Safeguarding and promoting the welfare of children is **everyone's** responsibility. Everyone in our school who comes into contact with children and their families have a role to play in safeguarding children. All staff in our school consider, at all times, what is in the best interests of children.

All staff within our school particularly important as they are in a position to identify concerns early and provide help to children to prevent concerns from escalating.

All staff are trained on how to promote a safe learning environment and to effectively risk assess specific situation. Staff are then taught how to reduce this risk or manage to ensure the children remain safe. The staff are also trained on safeguarding procedures and how to develop a welcoming and trusting learning environment.

All our staff are aware of the early help process and understand their role in this. This includes being able to identify emerging problems to recognise children who may benefit from early help. Staff know in the first instance to discuss their concerns with the Designated Safeguarding Lead and understand they may be required to support other agencies and professionals in assessments for early help.

The school also employs an out of class Senior Safeguarding Lead who dedicates her time to liaising with outside agencies, families and the children directly themselves. These are able to incidentally catch the Senior Designated Safeguarding Lead at the beginning/ end of the day or book an appointment with her. They can also have access to her work mobile phone number.

The importance of children and social workers meeting during the school day is of high importance to us and the DSLs work with social care and safeguarding partners to ensure children subject to child protection, child in need and LAC plans are kept safe, and the child's needs are met.

Safeguarding Training

All our staff are aware of systems within **Whitemoor Academy** and these are explained to them as part of staff induction, which include our child protection policy; the employee code of conduct and the role of the Designated Safeguarding Lead and Keeping Children Safe in Education 2023.

Our school ensures a full induction programme is delivered to ensure any new staff are aware of all the safeguarding procedures in place before beginning work.

All our staff receive safeguarding and child protection training which is updated every three years. In addition, to this training all staff members receive child protection and safeguarding updates when required, but at least annually. This is delivered by the DSLs.

All our staff are aware of the process for making referrals to children's social care and for statutory assessments under the Children Act 1989 and understand the role they may have in these assessments.

All our staff know what to do if a child is raising concerns or makes a disclosure of abuse and/or neglect. Staff will maintain a level of confidentiality whilst liaising with the Designated Safeguarding Lead and children's social care. Our staff will never promise a child that they will not tell anyone about a disclosure or allegation, recognising this may not be in the best interest of the child.

Staff responsibilities

All staff have a key role to play in identifying concerns and provide early help for children.

To achieve this, they will:

- Establish and maintain an environment where children feel secure, are encouraged to talk and are listened to.
- Ensure children know that there are adults in the school who they can approach if they are worried or have concerns.
- Plan opportunities within the curriculum for children to develop the skills they need to assess and manage risk appropriately and keep themselves safe.
- Lead and ensure robust arrangements and procedures are in place to effectively manage and regularly monitor the school online safety, and specifically appropriate filtering and monitoring on school devices and school networks which are reflected in this Child Protection Policy, including awareness of ease of access to mobile phone networks. In agreement with the trust
- Attend training in order to be aware of and alert to the signs of abuse.
- Maintain an attitude of "it could happen here" with regards to safeguarding.
- Record their concerns if they are worried that a child is being abused and report these to the DSL as soon as practical that day. If the DSL is not contactable immediately a Deputy DSL should be informed.
- Be prepared to refer directly to social care, and the police if appropriate, if there is a risk of significant harm and the DSL or their Deputy is not available.
- Follow the allegations procedures if the disclosure is an allegation against a member of staff.
- Follow the procedures set out by the NSCP and take account of guidance issued by the DfE KCSiE 2023.
- Support pupils in line with their child protection plan, child in need plan, LAC Care Plan.
- Treat information with confidentiality but never promising to "keep a secret."
- Notify the DSL or their Deputy of any child on a child protection plan or child in need plan who has unexplained absence.
- Have an understanding of early help and be prepared to identify and support children who may benefit from early help.
- Liaise with other agencies that support pupils and provide early help.
- Ensure they know who the DSL and Deputy DSLs are and know how to contact them.

- Have an awareness of the Child Protection Policy, the Behaviour Policy, the Staff Behaviour Policy (or Code of Conduct), procedures relating to the safeguarding response for children who go missing from education and the role of the DSL.

Senior Leadership/Management Team responsibilities:

- Contribute to inter-agency working in line with HM Working Together to Safeguard Children 2018 (updated December 2020) guidance.
- Provide a co-ordinated offer of early help when additional needs of children are identified.
- Ensure all staff, supply staff and volunteers are alert to the definitions of abuse and indicators, and through access to regular training opportunities and updates.
- Ensure staff are alert to the various factors that can increase the need for early help.
- Working with Children's Social Care, support their assessment and planning processes including the school's attendance at conference and core group meetings as appropriate.
- Carry out tasks delegated by the multi academy trust such as training of staff and volunteers, safer recruitment and maintaining of a single central register.
- Provide support and advice on all matters pertaining to safeguarding and child protection to all staff regardless of their position within the school.
- Treat any information shared by staff or pupils with respect and follow agreed policies and procedures.
- Ensure that allegations or concerns against staff including low-level concerns are dealt with in accordance with guidance from Department for Education (DfE KCSiE 2023 Part Four 'Allegations made against/Concerns raised in relation teachers including supply teachers, other staff, volunteers, and contractors in Sections One and Two.

KCSiE 2023 paragraphs 187 to 202 states, 'Children potentially at greater risk of harm and Children who need a social worker due to safeguarding or welfare needs'.

The school will work very closely with Social Care to ensure the child receives a collaborative approach to their safety.

Teachers (including ECTs) and Headteachers – Professional Duty

The Teachers Standards 2012 (updated 13 December 2021) remind us that teachers, newly qualified teachers and headteachers should safeguard children and maintain public trust in the teaching profession as part of our professional duties.

The Children and Social Work Act of 2017, places responsibilities for Designated Teacher to have responsibility for promoting the educational achievement of children who have left care through adoption, special guardianship, or child arrangement orders or who were adopted from state care outside England and Wales.

The Headteacher will work closely with teachers and fellow DSLs to ensure children who meet these criteria are making good progress and achieving what they are capable of. This will be regularly reported back to care givers.

Designated Safeguarding Lead

We have a Senior Designated Safeguarding Lead who takes lead responsibility for safeguarding children and child protection who has received appropriate training and support for this role. The Snr Designated Safeguarding Lead is a senior member of the school leadership team, and their responsibilities are explicit in their job description.

We also have a Deputy Safeguarding Lead, who will provide cover for the Senior Designated Safeguarding Lead when they are not available. **Our Deputy Safeguarding Lead has received the same training as our Senior Designated Safeguarding Lead.** They will provide additional support to ensure the responsibilities for child protection and safeguarding children are fully embedded within the school ethos and that specific duties are discharged. They will assist the Senior Designated Safeguarding Lead in managing referrals, attending child protection conferences, reviews, core group meetings and other meetings of a safeguarding and protection nature to support the child/children.

All DSL's have completed the required training and are overseen by the Headteacher to ensure we fulfil our child protection responsibilities and meet the needs of the children/ young people on roll.

We acknowledge the need for effective and appropriate communication between all members of staff in relation to safeguarding pupils. Our Designated Safeguarding Lead will ensure there is a structured procedure within the school, which will be followed by all the members of the school community in cases of suspected abuse.

The Senior Designated Safeguarding Lead is expected to:

Manage Referrals

- Refer cases of suspected abuse or allegations to the relevant investigating agencies.
- Support staff who make referrals to children's social care and other referral pathways.
- Refer cases where a person is dismissed or left due to risk/harm to a child and the DBS as required.
- Ensure arrangements are in place year-round for all staff and volunteers to seek advice, support and inform of safeguarding concerns, or incidents and disclosures that inform children are at risk of harm, or abuse, harm or bullying or sexual harm or harassment has occurred.
- Ensure appropriate systems are in place to manage and address online safety, access to mobile phone networks, especially for those children who are potentially at greater risk of harm, abuse, and exploitation and refer concerns where required linked to the PREVENT duty.

All DSLs meet regularly to keep each other informed of cases within school. We also include the SENDCO to ensure those vulnerable children are also being catered for. Should children be subject of safeguarding concerns the Senior DSL remains responsible for oversight of any child on placements or alternative education arrangements.

Work with others

- Liaise with the headteacher (where the Senior Designated Safeguarding Lead role is not carried out by the headteacher) to inform him/her of any issues and ongoing investigations.
- As required, liaise with the 'case manager' (as per Part Four of KCSiE 2023) and the LADO where there are child protection concerns/allegations that relate to a member of staff.
- Liaise with the case manager and the LADO/LADO Allegation Officer where there are concerns about a staff member.
- Liaise with staff on matters of safety and safeguarding and deciding when to make a referral by liaising with other agencies and acts as a source of support, advice, and expertise for other staff.
- Take part in strategy discussions or attend inter-agency meetings and/or support other staff to do so and to contribute to the assessment of children.
- Liaise with the local authority and other agencies in line with HM Working Together to Safeguard Children 2018 (updated December 2020) and the local Nottinghamshire Safeguarding Children Partnership procedures and practice guidance.
- The headteacher, designated safeguarding leads and governing body/trust are aware of the local arrangements put in place by the Local Authority.

All DSLs attend regular networks to receive updates from the Local Authority. Any updates are shared with wider staff through briefings, staff meetings or via email.

Undertake training

- Formal Designated Safeguarding Lead training will be undertaken every two years. Informal training and updating of knowledge and skills will be at regular intervals, undertaken at least annually.

- The Senior Designated Safeguarding Lead is responsible for their own training and should obtain access to resources or any relevant refresher training.
- The Senior Designated Safeguarding Lead is also responsible for ensuring all other staff with designated safeguarding responsibilities access up to date and timely safeguarding training and maintains a register or data base to evidence the training.

The training undertaken should enable the Designated Safeguarding Lead to:

- Ensure that each member of staff has access to the child protection policy and procedures.
- Be alert to the specific needs of children in need, including those with special educational needs and or disabilities and young carers.
- Be able to keep detailed, accurate, secure written records of concerns and referrals.
- Understand the Prevent Duty and provide advice and support to staff on protecting and preventing children from the risk of radicalisation and being grooming into extremist behaviours and attitudes (KCSiE 2023 Annex A and B).
- Understand the reporting requirements for FGM.
- Understand and support children to keep safe when online and when they are learning at home (KCSiE 2023 Part Two – The Management of Safeguarding and page 111 to 116 and 134, 136 142 to 144, 152 and 158).
- Encourage a culture of protecting children, listening to children and their wishes and feelings.

Raise awareness

- Ensure that the child protection policies are known, understood, and used appropriately.
- Ensure that the child protection policy is reviewed annually in consultation with staff members, and procedures are updated and reviewed regularly and implemented, and that the governing body is kept up to date and actively involved.
- Work strategically to ensure policies and procedures are up to date and drive and support development work within the school.
- Ensure that the child protection policy is available to parents and carers and uploaded to the school website and make parents/carers aware that referrals may be made about suspected abuse or neglect.
- Ensure all staff receive induction training covering child protection before working with children and can recognise and report any concerns immediately as they arise.

Child Protection file

- The Senior Designated Safeguarding Lead is responsible for ensuring that when a child leaves the school or college their 'child protection,' 'child in need' file or 'confidential' file is transferred to the new school or college at the same time the child goes on roll of its new school or education provision.
- A record of the number of children open and subject to CP, CiN and LAC concerns is maintained and shared with the governing body annually.
- A record or data on the cohort of children having or have had a social worker and social care involvement will be maintained.

- Our school will maintain, keep and storing records, where a concern about a child has been identified in accordance with statutory guidance in KCSiE 2023.

In accordance with KCSiE 2023 Annex C page 166, 167 paragraphs 68, 102, 122 to 123, 540 and 543, the school will first establish whether the new school has CPOMs. If this is the case, we will electronically send the child's safeguarding file as soon as possible and within 5 days. If the school does not have CPOMS, we will print the file and either hand deliver it, obtaining a receipt) or will send it via recorded delivery from the Post Office.

Availability

- During term time the Senior Designated Safeguarding Lead (or a Deputy) will always be available (during school or college hours) for staff in the school or college to discuss any safeguarding concerns. In the absence of the Designated Safeguarding Leads a member of the senior leadership team or Trust Designated Safeguarding Lead will be nominated to provide cover. Appropriate arrangements will also need to be in place all year round for any out of school hours' activities in line with the guidance contained in DfE KCSiE 2023 Part Two and Annex C.

Headteacher

The Headteacher of the school will ensure that:

- The policies and procedures adopted by the trust, (particularly those concerning referrals of cases of suspected abuse and neglect), are understood, and followed by **all** staff.
- The school maintains an up-to-date Single Central Record (SCR) which is reviewed regularly and is compliant with statutory guidance.
- Sufficient resources and time are allocated to enable the Designated Safeguarding Lead and other staff to discharge their responsibilities, including taking part in strategy discussions and inter-agency meetings, and contributing to the assessment of children.
- All staff and volunteers feel able to raise concerns about poor or unsafe practice with regard to children, and such concerns are addressed sensitively and effectively in a timely manner in accordance with agreed whistle-blowing policies.
- The Headteacher will ensure all staff including supply teachers and volunteers have access to and read and understand the requirements placed on them through: - the school's Child Protection Policy; the Staff Code of Conduct.
- The Headteacher will ensure there are mechanisms in place to assist staff to fully understand and discharge their role and responsibilities as set out in KCSiE 2023.
- Where there is an allegation made against a member of staff (either paid or unpaid) that meets the criteria for a referral to the LADO, then the headteacher or principal will discuss the allegation immediately with the LADO (within 24 hours) and ensure that cases are managed as per Part Four: Allegations made against/Concerns raised in relation to teachers, including supply teachers, other staff, volunteers, and contractors in KCSiE 2023. If the allegation is against the Headteacher/Principal, then the Chair of the MAT and CEO will manage the allegation – see below.

Governing Body and Multi- Academy Trust

We recognise our Governing body/Trust has a strategic leadership responsibility for our school's safeguarding arrangements and must ensure they comply with their duties under legislation and must have regarding to KCSiE 2023, ensuring policies, procedures and training in our school are effective and comply with the law at all times.

The governing body and trust will be collectively responsible for ensuring that safeguarding arrangements are fully embedded within the school's ethos and reflected in the school's day to day safeguarding practices by:

- Ensuring there is an individual member of the governing body to take leadership responsibility for safeguarding and champion child protection issues in the school.
- Ensuring that the school has effective policies and procedures in line with statutory guidance
- Ensuring that safeguarding policies and procedures are in place for appropriate action to be taken in a timely manner to promote a child's welfare.
- Recognising the importance of information sharing between agencies through the statutory guidance provided within KCSiE 2023 Annex C page 166 to 170 and paragraphs 56 to 57, 115 to 121, 375, to 390, 476, 540 and 543 and page 158, the additional clarification about GDPR and withholding information.
- Ensuring cooperation with the local authority and other safeguarding partners.
- Appointing a Senior Designated Safeguarding Lead from the leadership team to take lead responsibility for child protection/safeguarding and that a Designated Teacher for Looked After Children is appointed and appropriately trained.
- Ensuring that all staff, supply teachers and governors read and fully understand at least KCSiE 2023 Part One and or Annex A as a minimum and ensure that there are mechanisms in place to assist staff to understand and discharge their role and responsibilities as required within the guidance.
- Ensuring that the governing body understands it is collectively responsible for the school's safeguarding arrangements, even though a governor will be nominated as the 'Safeguarding Governor' and person who will champion all safeguarding requirements.'
- All members of the governing body will undertake safeguarding training to ensure they have the knowledge and information needed to equip them with the knowledge to provide strategic challenge to test and assure themselves that the safeguarding policies and procedures in place are effective and support the delivery of robust 'safeguarding arrangements and act as the 'critical friend'. This training must focus on their strategic role and not on operational procedures.
- The Chair of Governors and named Safeguarding Governor will access role specific training to enable them to comply and discharge their child protection/ safeguarding responsibilities including should any allegations be made against the Headteacher/ Principal.
- The Governing body will collectively ensure there is a training strategy in place for all staff, including the headteacher, so that child protection training is undertaken with refreshed in line with KCSiE 2023.
- Ensuring that staff undergo safeguarding child protection training at induction and that there are arrangements in place for staff to be regularly updated to ensure that safeguarding remains a priority.
- Ensuring that temporary staff and volunteers who work with children are made aware of the school's arrangements for child protection and their responsibilities

- Ensuring there are procedures in place to manage allegations against staff and exercise disciplinary functions in respect of dealing with a complaint KCSiE 2023 Part Four Section One.
- Ensuring that arrangements/procedures are in place to manage and provide clarity on the process for sharing 'low level' concerns, which should be referred to within the school/college Staff Code of Conduct, (Allegations and concerns about a staff member that after initial consideration by the 'case manager' do not meet the criteria for a referral to LADO).
- Ensuring when making a referral to the LADO Service a LADO referral form is fully completed.
- Ensuring a response if there is an allegation against the headteacher by liaising with the LADO or other appropriate officers within the local authority.
- Ensuring appropriate responses to children who go missing from education, particularly on repeat occasions, to help identify the risk of abuse, including child sexual exploitation and going missing in future.
- Be aware of the issues involving the complexity of serious violence and sexual violence and sexual harassment between children and ensure the school has policy, procedures and staff are trained (including the DSL and Senior Leadership) to recognise and respond to incidents and resources to manage actions and support for those involved.
- Be alert and respond to harmful online challenges and hoaxes, including providing information and advice to parents and carer and informing where to get help and support.
- Be alert to the growing concerns involving knife crime and ensure the school works closely with the police and safeguarding partners to raise awareness of the impact of such crime and adopt proactive practice to address concerns locally and within the community.
- Ensuring appropriate filters and monitoring systems are in place to protect children online and children are taught about keeping safe online through the curriculum.
- Giving staff the opportunities to contribute and shape safeguarding arrangements and child protection policy.
- When the school's premises are used for non-school/college activities the Governing body/trust will seek assurances that the body concerned has appropriate safeguarding and child protection policies and procedures in place, and inspect them as needed, including liaising with the Head teacher/ trust. This will apply regardless of whether or not children who attend the provision are on the school or college roll.
- Any safeguarding concerns involving outside organisations will be addressed through our school/college safeguarding policies and procedures and in line KCSiE 2023 paragraph 377.
- Prevent people who pose a risk of harm from working with children by adhering to statutory responsibilities to check staff who work with children, making decisions about additional checks and ensuring volunteers are supervised as required.
- Ensure at least one person on an interview panel has completed safer recruitment training.
- Inform any new prospective employees' candidate that our school will carry out online social media checks are completed (KCSiE 2023 Part Three Safer Recruitment).
- Recognising that certain children are more vulnerable than others, such as looked after children and children with special educational needs and disabilities.
- Be open to accepting that child abuse and incidents can happen within the school and be available to act decisively upon them.

Looked After Children – The Role of Designated Teacher (maintained schools and academies) and the Designated Safeguarding Lead

- A teacher is appointed who has responsibility for promoting the educational achievement of children who are looked after. They have the appropriate training. The Designated Teacher will work with the Virtual School to ensure that the progress of the child is supported.
- The Designated Safeguarding Lead will also have details of the child's social worker and the name of the Assistant Head of the Virtual School. The Designated Safeguarding Lead will work closely with the Designated Teacher, as we recognise that children may have been abused or neglected before becoming looked after. We will ensure their ongoing safety and wellbeing as well as supporting their education, through linking with their social worker, carers, and parents where appropriate.
- We also recognise those children who were previously Looked-After potentially remain vulnerable and all staff will be informed of the importance of maintaining support for them through our school pastoral system. As a school, we will continue to recognise the importance of working with agencies and take prompt actions where necessary to safeguard these children, who may remain vulnerable.

Children with Special Educational Needs

We recognise that children with special educational needs (SEN) and or disabilities can face additional safeguarding challenges on and offline. Children with SEN and or disabilities are especially vulnerable when identifying concerns due to their impaired capacity to resist or avoid abuse. They may have speech, language and communication needs which may make it difficult to tell others what is happening.

All staff are aware that additional barrier can exist when recognising abuse and neglect for children with SEND and be more prone to peer group isolation or bullying (including prejudice-based bullying) than other children. They may not always show outward signs and may have communications barriers and difficulties in reporting challenges, especially involving exploitation or incidents involving child- on -child harm, abuse, or harassment and particularly where that harassment or harm is of a sexual nature. Our staff's vigilance will be a supporting factor to keeping all children safe.

Our policy reflects the fact that additional barriers can exist when recognising abuse and neglect in this group of children which include:

- assumptions that indicators of possible abuse such as behaviour, mood and injury relate to the child's disability without further exploration.
- children with SEN and disabilities can be disproportionately impacted by things like bullying, without outwardly showing any signs; and communication barriers and difficulties in overcoming their ability to disclose incidents or the risk of harm they feel subject to,
- addressing individual behaviour concerns and incidents considering the child's SEN and disabilities.
- recognising and having in place additional support for example to teach, advise, mentor and support children with SEND from online harms, hoaxes, bullying, grooming and radicalisation and enable them to have confidence and the ability to stay safe online, either in schools or outside the school environment.

Taking action where concerns are identified

Our staff recognise the difference between concerns about a child and a child in immediate danger. If staff have concerns about a child, they will need to decide what action to take. A discussion should take place with the Senior Designated Safeguarding Lead, to agree a course of action.

If a child is in immediate danger or risk of harm a referral will be made immediately to the Multi-Agency Safeguarding Hub and/or immediately to the police if at imminent risk of harm by the member of staff if required, with the Designated Safeguarding Lead being informed of the referral.

If a child chooses to tell a member of staff about alleged abuse, there are a number of actions that staff will undertake to support the child:

- The key facts will be established in language that the child understands, and the child's words will be used in clarifying/expanding what has been said.
- No promises will be made to the child, e.g., to keep secrets.
- Staff will stay calm and be available to listen.
- Staff will actively listen with the utmost care to what the child is saying.
- Where questions are asked, this should be done without pressurising, and only using open questions.
- Leading questions should be avoided as much as possible
- Questioning should not be extensive or repetitive
- Staff will not/ should not put words in the child's mouth but will subsequently note the main points carefully.
- A full written record will be kept by the staff duly signed and dated, including the time the conversation with the child took place, outline what was said, comment on the child's body language etc.
- It is not appropriate for staff to make children write statements about abuse that may have happened to them or get them to sign the staff record.
- Staff will reassure the child and let them know that they were right to inform them and inform the child that this information will now have to be passed on.
- The Designated Safeguarding Lead will be immediately informed unless the disclosure has been made to them.
- Information should be shared with children's social care without delay, either to the child's own social worker or to the MASH. Children's Social Care will liaise with the police where required, which will ensure an appropriate police officer response rather than a uniformed response.
- The Police would only therefore be contacted directly in an emergency or if a child is in immediate risk of harm, abuse, or danger.
- If unsure, the MASH has available a Consultation Phone Line during office hours where a conversation (without naming children) can be used to speak with a qualified social worker. No record of the conversation will be made it is purely an advice line.

Staff should never attempt to carry out an investigation of suspected child abuse by interviewing the child or any others involved especially if a criminal act is thought to have occurred. The only people who should investigate child abuse and harm are Social Care, Police, or the NSPCC.

Confidentiality

We recognise that all matters relating to child protection are confidential; however, a member of staff must never guarantee confidentiality to children; children will not be given promises that any information about an allegation will not be shared.

Where there is a child protection concern it will be passed immediately to the Designated Safeguarding Lead and/or to children's social care. When a child is in immediate danger children's social care/the police will be contacted.

The Headteacher or Senior Designated Safeguarding Lead will disclose personal information about a pupil to other members of staff, including the level of involvement of other agencies, only on a 'need to know' basis.

All staff are aware that they have a professional responsibility to share information with other agencies in order to safeguard children. They are aware that the Data Protection Act 1998 should not be a barrier to sharing of information where failure to do so would result in a child being placed at risk of harm.

Information Sharing

Effective sharing of information between practitioners and local organisations and agencies is essential for early identification of need, assessment, and service provision to keep children safe. Serious Case Reviews (SCRs) now known as Rapid Reviews (RRs) have highlighted that missed opportunities to record and thereby understand the significance of sharing information in a timely manner can have severe consequences for the safety and welfare and well-being of children (Working Together to Safeguard Children 2018, updated December 2020).

We will adopt the information sharing principles detailed in statutory safeguarding guidance contained within:

- *DfE KCSiE 2023 has several sections which provide clarity on information sharing processes and GDPR including within Annex C which makes clear the powers to hold and use information when promoting children's welfare.*
- *HM Working Together to Safeguard Children 2018 Paragraph 23 to 27 and on pages 20 and 21.*
- *HM Information Sharing: Advice for practitioners providing safeguarding services to children, young people, parents, and carers (which has been updated to reflect the General Data Protection Regulation (GDPR) and Data Protection Act 2018.*

Staff, governors/trust members have completed GDPR Information Sharing training.

Records and Monitoring (KCSiE 2023 paragraphs 68 to 70, Part Four, Part Five, Annex C)

We use an electronic monitoring system called CPOMs. This allows us to maintain good quality records and supports us to build up the whole picture for the child's journey. It also ensures the right people are alerted or informed of specific incidents and allows us to gather information to be shared with relevant outside agencies.

Any concerns about a child will be recorded in writing within 24 hours. All records will provide a factual and evidence-based account and there will be accurate recording of any actions. Records will be signed, dated and, where appropriate, witnessed. Where an opinion or professional judgement is recorded this should be clearly stated as such.

At no time should an individual teacher/member of staff or school be asked to or consider taking photographic evidence of any injuries or marks to a child's person; this type of behaviour could lead to the staff member being taken into managing allegations procedures. The body maps should be used in accordance with recording guidance and to support clarity for example of areas of injury, marks and bruising and or touching.

Any concerns should be reported and recorded without delay to the appropriate safeguarding services e.g., MASH or the child's social worker if already an open case to social care.

A chronology will be kept in the main school file prior to the commencement of a concern file. Staff, particularly pastoral staff, will record any minor concerns on the chronology and will take responsibility for alerting the Designated Safeguarding Lead should the number of concerns rise or, in their professional judgement, become significant. At the point at which a concern file (see below) is commenced then the chronology can be transferred to the concern file.

Our school will ensure all our files will be available for external scrutiny for example by a regulatory agency or because of a serious case review or audit.

Why recording is important

Our staff will be encouraged to understand why it is important that recording is comprehensive and accurate and what the messages from serious case reviews are in terms of recording and sharing information. It is often when a chronology of information is pieced together that the level of concern escalates or the whole or wider picture becomes known.

We acknowledge without information being recorded it can be lost. This could be crucial information, the importance of which is not always necessarily apparent at the time. On occasions, this information could be crucial evidence to safeguard a child or be evidence in future criminal prosecutions.

The Child Protection (CP), Child in Need (CiN) or Confidential file

(KCSIE 2023 Annex C pages 166 to 170 and paragraphs 68,102,122, 123, 540 and 543).

The establishment of a Child Protection, CiN or Confidential Safeguarding file, which is separate from the child's main school file, is an important principle in terms of storing and collating information about children which relates to either a child protection or safeguarding concern or an accumulation of concerns about a child's welfare which are outside of the usual range of concerns which relate to ordinary life events. It should be borne in mind that what constitutes a 'concern' for one child may not be a 'concern' for another and the child's particular circumstances will need to be taken into account for example if a child is subject to a child protection plan, CiN plan or has looked after status (LAC). Professional judgement will therefore be an important factor when making this decision and will need clear links between pastoral staff and those with Designated Safeguarding Lead responsibilities in school.

A 'child protection' or 'confidential' file should be commenced in the event of:

- A referral to MASH/Children's Social Care.
- A number of minor concerns on the child's main school file.
- Any child open to social care.

The school will keep electronic records of concerns about children even where there is no need to refer the matter to MASH/Children's Social Care (or similar) immediately, but these records will be kept within the separate concerns file.

Records will be kept up to date and reviewed regularly by the Snr Designated Safeguarding Lead, to evidence and support actions taken by staff in discharging their safeguarding arrangements. Original notes will be retained (but clearly identified as such) as this is a contemporaneous account; they may be important in any criminal proceedings arising from current or historical allegations of abuse or neglect.

The 'confidential' file can be active or non-active in terms of monitoring i.e., a child is no longer LAC, subject to a child protection plan or EHAF and this level of activity can be recorded on the front sheet as a start and end date. If future concerns arise, they can be re-activated and indicated as such on the front sheet and on the chronology as new information arises.

Transfer of child's child protection file, child in need, LAC, or confidential file (statutory requirement):

Our school understands the file transfer guidance contained in KCSiE 2023 and ensures when a child moves school/education provision their child protection/confidential file is sent securely to their new educational setting when the child starts/ leaves the school/academy.

For those children subject of social care and safeguarding agency involvement will ensure the file is able to evidence the child's journey and include key information as described in KCSiE 2023 Should a child subject to social care involvement transfer schools, college, or education provider we will ensure the child's child protection or confidential file move is transferred within 5 days as required by KCSiE.

Our Senior DSLs will liaise directly with the receiving school, college or alternative placement and hold a discussion to share important information to support the child's transfer to ensure the child remains safeguarded, has any 'reasonable adjustments' agreed, and put in place and to ensure the changes experienced by the child are as smooth as possible to enable a positive integration experience and engagement with new staff and learning.

In accordance with KCSiE 2023, we will maintain information on cohorts of children who have been open to social care, have had a social worker or who are closed to social care and may have returned to the family home. This information will only be considered for sharing 'if appropriate' with the new school or provider in advance of the child leaving to allow for the new school to continue supporting the children who have had a social worker or been victims of abuse, including those who are currently receiving support through the 'Channel' programme. (KCSiE 2023 paragraph 123 and pages 150 to 152 and Annex C).

Recording Practice

Timely and accurate recording will take place when there are any issues regarding a child. A recording of each and every incident or concern for the child will be made, including any telephone calls to other professionals. These will also be recorded on the chronology and kept within the child protection file for that child, as over time they are likely to help identify any patterns or emerging risks and needs. This will include any contact from other agencies who may wish to discuss concerns relating to a child. Actions will be agreed, and roles and responsibility of each agency will be clarified, and outcomes recorded. The chronology will be brief and log activity; the full recording will be on the record of concern.

Further detailed recording will be added to the record of concern and will be signed and dated. Records will include an analysis of the event or concerns and will take account of the holistic needs of the child, and any historical information held on the child's file.

Support and advice will be sought from social care, or early help whenever necessary. In this way a picture can emerge, and this will assist in promoting an evidence-based assessment and determining any action(s) that needs to be taken.

Such robust practice across child protection and in safeguarding and promoting the welfare of children will assist the school and DSL team in the early identification of any concerns which may require addressing further and the prevention of future harm, risk, or abuse.

The Designated Safeguarding Lead will have a systematic means of monitoring children known or thought to be at risk of harm (through the concern file and through an ongoing dialogue with pastoral staff). They will ensure that we contribute to assessments of need and support multi-agency plans for those children.

Educating Young People – Opportunities to teach safeguarding

(KCSiE 2023 paragraphs 124 to 140, Annex A & Annex C Online Safety paragraph 144 to 148).

As a school we will teach children in an age-appropriate way about youth produced imagery, on-line risks associated with social networking to prevent harm by providing them with the skills, attributes, and knowledge to help them navigate risks, including covering online safety, remote learning, filters and monitoring, information security, cyber-crime, reviewing online safety platforms and use of mobile technology. We will ensure appropriate filters and monitoring systems in place and regularly review their effectiveness

The education we provide for online safety will take into account the need for children to learn using online technologies in a safe environment whether that be in school, in the home or in a community environment. This will also be taught as part of a wider RSHE programme, as well as through other subject areas and ICT.

We will ensure a whole school approach is in place to promote giving children the space to explore key issues in a sensitive way and the confidence to seek the support of adults should they encounter problems or online harms, hoaxes or harassment including involving incidents of sexual violence and sexual harassment between children.

We will carefully consider mobile phone use and the new filtering and monitoring standard required by DfE and how this is managed in school and ensure it is reflected in our mobile and smart technology policy. This will include where children have unlimited and unrestricted access to the internet via mobile phone networks (i.e., 3G, 4G and 5G).

Our arrangements will be regularly reviewed to address this additional area of safeguarding as technologies change on a regular basis and having access to smart technology could mean some children, whilst at school/college, sexually harass, bully, and control others via their mobile and smart technology, share indecent images consensually and non-consensually (via large chat groups) and view and share pornography and other harmful content.

We address these issues regularly with parents during open evenings and with the children via RSHE and PSHE sessions. We also hold regular internet safety assemblies throughout the school year.

Our school's response to identifying, responding to, and managing concerns, incidents, or disclosures regarding sexual violence between children in school.

Helplines and reporting

- Children can talk to a Child Line counsellor 24 hours a day about anything that is worrying them by ringing 0800 11 11 or in an online chat at <https://www.childline.org.uk/get-support/1-2-1-counsellor-chat/>
- Where staff members feel unable to raise an issue with their employer, or feel they have a genuine concern that is not being addressed we acknowledge they may wish to consider whistleblowing channels. Likewise, if parents and carers are concerned about their child, they can contact the NSPCC Helpline by ringing 0800 028 028 0295, or by emailing help@nspcc.org.uk

Appendix

Children who may be particularly vulnerable KCSiE 2023

Some children may have an increased risk of abuse. Many factors can contribute to an increase in risk, including prejudice and discrimination, isolation, social exclusion, communication issues and reluctance on the part of some adults to accept that abuse can occur. To ensure that all of our pupils receive equal protection, we will give special consideration to children who are:

- disabled or have special educational needs
- children who need a social worker
- elective home educators
- children requiring mental health support
- looked after children and previously looked after children
- young carers
- affected by parental substance misuse, domestic violence or parental mental health needs
- asylum seekers
- living away from home
- vulnerable to being bullied, or engaging in bullying
- living in temporary accommodation
- live transient lifestyles
- living in chaotic and unsupportive home situations
- vulnerable to discrimination and maltreatment on the grounds of race, ethnicity, religion, disability or sexuality
- at risk of sexual exploitation
- do not have English as a first language
- at risk of female genital mutilation (FGM)
- at risk of forced marriage

- at risk of being drawn into extremism.
- at risk of so-called honour-based violence
- missing in education
- have family members in prison
- at risk of child criminal exploitation and/or county lines
- affected by homelessness
- affected by the court system
- affected by domestic abuse

Management log

Document	Safeguarding & child protection – local procedures
Author	Judi O’Leary
Person responsible for the document	Judi O’Leary
Date approved	
Date issued	1 September 2023
Review period	Annually
Next review	Summer 2024
Reviewer	Chair of the Board on behalf of the LGB / Chair of the LGB on behalf of the Board of trustees

Document history

Version	Date authored	Author	Date approved	Date issued	Comments
V1	September 2018	Rob Lord	25 September 2018	2 October 2018	To secure our academies safeguarding procedures
V2	October 2019	Rob Lord	17 October 2019	18 October 2019	Review of our academies safeguarding procedures in light of the updates in KCSiE
V3	March 2020	Rob Lord	30 March 2020	30 March 2020	Revised to ensure we have measures in response to the coronavirus national pandemic
V4	July 2020	Rob Lord	24 August 2020	1 September 2020	Revised to reflect changes to KCSiE 2020 and effective from 1 September 2020
V5	July 2020	Rob Lord	27 July 2021	1 September 2021	Revised to reflect changes to KCSiE 2021 and effective from 1 September 2021

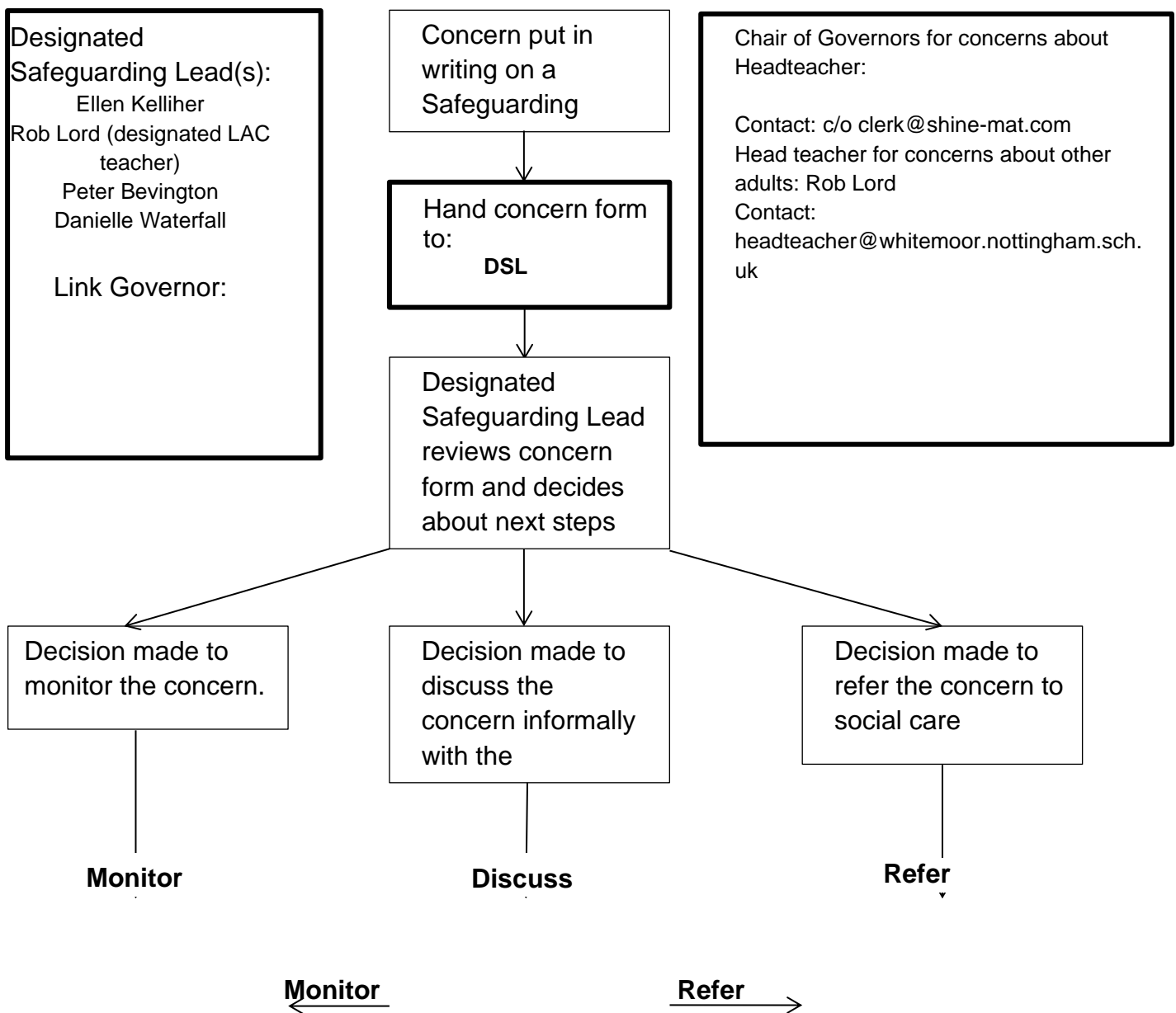
V6	July 2022	Rob Lord Chair of the DSL and		1 September 2022	Revised to reflect changes to KCSiE 2022 and effective from 1 September 2022 New template used.
V7	July 2023	Rob Lord		1 September 2023	Revised to reflect changes to KCSiE 2023 and effective from 1 September 2023

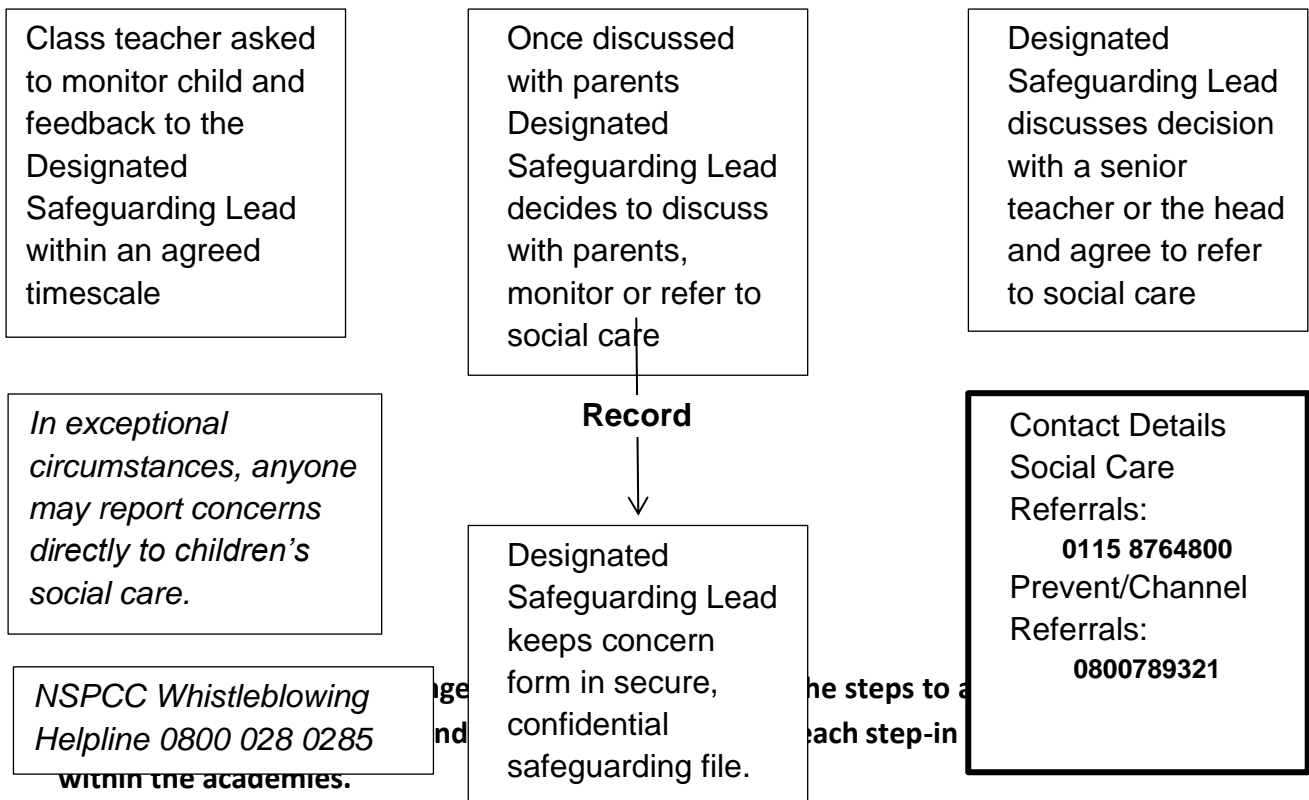
Designated Safeguarding Leads & Governor	
Name	Contact
Ellen Kelliher (Senior Safeguarding Lead and Family Support)	ekelliher@whitemoor.nottingham.sch.uk 07833527382
Rob Lord (Deputy Head/ Head of School)	rlord@whitemoor.nottingham.sch.uk
Judi O’Leary (Head teacher/ CEO)	headteacher@whitemoor.nottingham.sch.uk
Peter Bevington (Acting Deputy Head)	pbevington@shine-mat.com
Danielle Waterfall (Senco)	senco@whitemoor.nottingham.sch.uk
Rachel Fletcher (Deputy Head)	rfletcher@whitemoor.nottingham.sch.uk
Tracey Curtis (Clerk)	c/o clerk@shine-mat.com

The Designated Safeguarding Lead is responsible for safeguarding and child protection at the health and safety of any individual has been endangered.

Link <https://www.nspcc.org.uk/what-you-can-do/report-abuse/dedicated-helplines/whistleblowing-advice-line/>

FLOW CHART FOR RAISING SAFEGUARDING CONCERNS ABOUT A CHILD





Attached is an image of the concern forms which can be used at Whitemoor Academy if there is no access to CPOMS



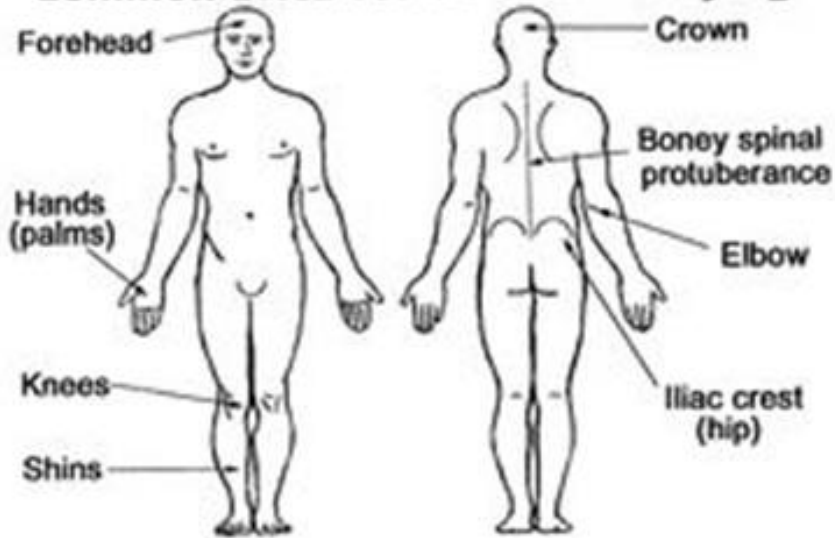
Whitemoor Academy Concern Form



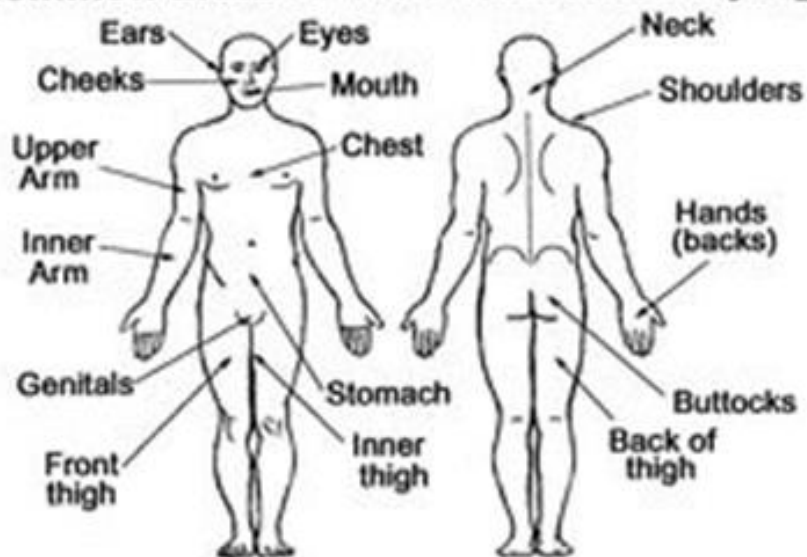
All staff members including volunteers must record any concerns or disclosures about a child. The form must be completed in full, as soon as possible and must be factual. Give the completed form to one of the DSL's (Ellen Keilher, Rob Lord, Rachel Fletcher and Laura ~~DiMartino~~).

Child's name:	D.O.B:	Date:	Time:	Place:
Siblings:			Staff completing this form:	
Please tick one of the following:				
Observed Behaviour <input type="checkbox"/>	Discussion <input type="checkbox"/>	Disclosure <input type="checkbox"/>		
Concern: (Use extra space on back if needed)			Front:	

Common sites for accidental injury

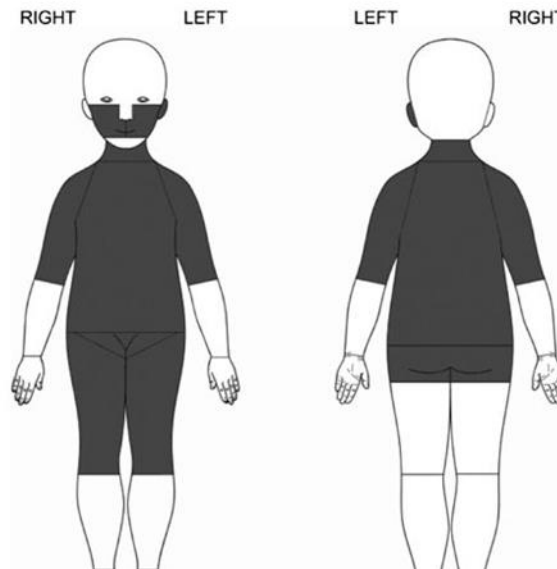


Common sites of Non-accidental injury



Common sites of bruising in children where physical abuse has occurred

Regions of the body (shaded area) where bruises were significantly more likely to occur in a child with confirmed physical abuse than in one where physical abuse was excluded.



What should staff do if they have any concerns about a child?

All concerns should still be reported to the DSL: Ellen Kelliher (DSL).

All staff should act on safeguarding concerns with the same continued importance. The information should then be entered into CPOMS and MASH informed if that is required.

What if Ellen Kelliher as DSL is unavailable?

In these very unusual circumstances, it is impossible to write for every eventuality. However, all staff should be aware that we have four trained DSL's:

- Mrs E Kelliher
- Mr R Lord
- Mr P Bevington
- Mrs D Waterfall

In the event of illness, they should be contacted in the order listed above.

If all DSL's are unavailable the member of staff with concerns should contact:

Mrs J O'Leary	SHINE Multi Academy Trust	Address: Bracknell Crescent, Whitemoor, Nottingham, NG8 5FF Website: https://www.shine-mat.com/our-schools/ Telephone: 07376 800614
---------------	---------------------------	---

and if that is not possible contact the DSL's in our trust in the following order:

DSL	Academy	Contact
Mr C Hollis	Scotholme Primary and Nursery School	Address: Fisher Street, Hyson Green, Nottingham, NG7 6FJ Website: www.scotholme.com Telephone: 0115 9781968
Mrs G Bradford Mrs M Neale	Langold Community School	Address: School Road, Langold, Worksop, S81 9PX Website: www.langold-dyscarr.org Telephone: 01909 730396
Mrs J Throssell	Ranskill Primary School	Address: Cherry Tree Walk, Ranskill, Retford, DN22 8LH Website: www.ranskillprimary.co.uk

		Telephone: 01777 818468
Mrs K Sharpe	Ironville and Codnor Park Primary School	Address: Victoria Street, Ironville, Derbyshire, NG16 5NB Website: www.ironvillecodnorpark.derbyshire.sch.uk Telephone: 01773 602936
Mrs L Devlin	John Hunt Academy	Address: John Hunt Academy, London Road, New Balderton, Newark, Nottinghamshire. NG24 3BN Website: https://www.johnhuntprimary.co.uk/ Telephone: 01636 682 007

If you have urgent concerns for a child or suspect that a child has been abused in any way, call 0300 500 80 90.

If you require an urgent response outside of working hours (08:30-17:00), contact the Emergency Duty Team (EDT) on 0300 456 4546.

In an emergency call 999.

To report a crime, call 101.

What arrangements are in place for supporting our children who do not meet the ‘vulnerable’ definition, but if school closure goes on for an extended period, we may have concerns?

All staff to keep in contact with families via Facebook, Twitter, phone calls, Spelling Shed Seneca (KS2 only), TT Rockstars (years 2-6) and the school website. We have also set up phase email addresses so that parents can email school if they have concerns regarding work or health.

Any concerns arising in the messages between staff and parents should be reported to the headteacher or if unavailable the assigned DSL.

All staff must report to the headteacher any family that they have had no contact with the online work platforms or via the phase email address for one whole working week. These children will become priority for well-being phone calls.

Children identified by the headteacher as “possible cause for concern” will have a clear plan of contact outlined by the headteacher and all communication will be recorded on CPOMS. Remember to be mindful that if the screen is visible in non-secure areas, for example, at home, that there can be a data breach, if other members of your family can see it.

All teaching staff will receive an encrypted email with the names of the children the headteacher feels may have “possible cause for concern” if the school is closed for an extended period.

If a class teacher becomes unwell and is unable to post due to illness, they must inform the headteacher.

The most vulnerable children will potentially need a home visit, so that they can be seen in person, by the DSL. (All usual measures around staff safety will be taken into account.) The frequency of the visit will be relative to the risk, as identified in the plan. Aiming to view through a window is appropriate.

Contact phone calls will also be important. While school is open, these calls should be made using school phones, rather than personal devices.

Staff should report to the headteacher any families that inform them that coronavirus has led to unemployment or redundancy and be alert to the potential stress and loss of income. For these parents, there will be some signposting for services posted on the website for them to get support, including from third-sector organisations.

What safeguarding issues do I need to consider when sending videos of myself teaching?

No live webcams messages to children or their families

If you are sending children teaching videos, please ensure:

- you wear suitable clothing, as should anyone else in the household,
- any computers used should be in appropriate areas, for example, not in bedrooms; and where possible be against a neutral background,
- the video should be saved, so that if any issues were to arise, the video can be reviewed,
- videos should be kept short,
- language is professional and appropriate, including any family members in the background.

What arrangements are in place to keep children not physically attending the school safe, especially online and how concerns about these children should be progressed?

Online e-safety links are on the school website, both for parents and children, parents have received a text message to alert them to these links.

<https://www.childnet.com/blog/keeping-children-happy-and-safe-online-during-covid-19>

- [Internet matters](#) - for support for parents and carers to keep their children safe online
- [London Grid for Learning](#) - for support for parents and carers to keep their children safe online
- [Net-aware](#) - for support for parents and careers from the NSPCC
- [Parent info](#) - for support for parents and carers to keep their children safe online
- [Thinkuknow](#) - for advice from the National Crime Agency to stay safe online
- [UK Safer Internet Centre](#) - advice for parents and carers

E-safety messages will also be communicated through Facebook, Twitter, Spelling Shed Seneca (KS2 only), TT Rockstars (years 2-6) and the school website.

If you have concerns regarding a child's safety online this should be reported to the DSL.